

Model	DL-1
Lamp:	MR16 Halogen or LED
Maximum Wattage:	35 watt, 8 watt LED
Input Voltage:	12V (remote transformer required)
Material:	Machined Aluminum
Hardware:	Stainless Steel
Finishes:	Seven Polyester Powder Coat
Lens:	Tempered Clear Glass
Cap Accessories:	Holds two accessories (optional)
Socket:	GY 6.35 Bi Pin Porcelain
IP Rating:	66
Certification:	Wet location landscape, UL1838.
Wiring:	12" 18 ga Teflon coated
Weight:	.8 lbs.
Warranty:	10 Years
Dimensions:	3 3/8" dia. faceplate x 2 3/8" dia. body (3 7/8" overall)



Shown in Black Texture
Finish (BKT)



SORAA



DAUER

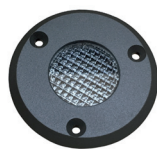


BRILLIANCE



METALS:

6061-T6 Aluminum



Front



Side

ORDERING LOGIC:

Model:	DL - 1
Metal:	A - Aluminum
Finish:	BK - Black BZ - Bronze WT - White BG - Beige
	BKT - Black Texture BZT - Bronze Texture SL - Silver CA - Clear Anodized

ORDERING EXAMPLE: DL - 1 - A - BK

ANODIZING PROTECTION:

To increase the corrosion resistance in our products, we use a three-step process:

1. Machine 6061-T6 copper-free aluminum.
2. Anodized pre-treatment applied.
3. Polyester powder coat finish applied.



SEALED WIRE PASS-THRU SYSTEM:

Our molded, high-temperature silicone wire pass-thru system is installed into every product to prevent water intrusion. Water will not leak into the lamp compartment. The socket is replaceable because it is not glued in.