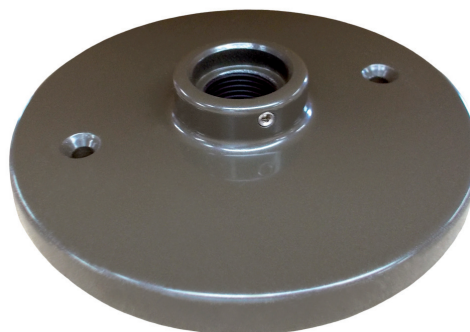


Model	MT-41
Material:	Machined Aluminum
Fixture Mount:	1/2" NPS
Finishes:	7 Polyester Powder Coat
Certification:	Wet location landscape, UL1838
Weight:	.4 lbs.
Warranty:	10 Years
Dimensions:	4" dia. x 1" thick

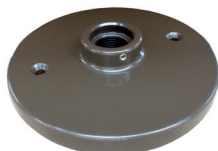


Shown in Bronze Powder Coat Finish (BZ)



METALS:

6061-T6 Aluminum



DESIGN FEATURE:

10-32 set screw provides positive locking after rotational aiming is completed.



Recommended installation is to locate the locking set screw above luminaire to provide a 'clean' look.



ORDERING LOGIC:

Model:	MT - 41
Metal:	A - Aluminum
Finish:	BK - Black BKT - Black Texture
	BZ - Bronze BZT - Bronze Texture
	WT - White SL - Silver
	BG - Beige CA - Clear Anodized

ORDERING EXAMPLE: MT - 41 - A - WT