

Model	MT-46
Material:	Machined Aluminum Cap
Mount:	7/8" slip fit
PVC Stake:	Available in 12" or 18"
Hardware:	Stainless Steel
Finishes:	7 Polyester Powder Coat
Certification:	Wet location landscape, UL1838
Weight:	1.3 lbs.
Warranty:	10 Years
Dimensions:	1 3/4" dia. cap, 2" dia. stake



Shown in Bronze Powder Coat Finish (BZ)



METALS:

6061-T6 Aluminum



ORDERING LOGIC:

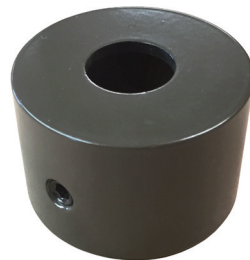
Model:	MT - 46
Metal:	A - Aluminum
Stake Length:	12 - 12" (standard) 18 - 18"
Cap Finish:	BK - Black BZ - Bronze WT - White BG - Beige
	BKT - Black Texture BZT - Bronze Texture SL - Silver CA - Clear Anodized

DESIGN FEATURE:

An important design feature of our Model MT-46 Mount offers improved performance when compared to the competition.

Instead of using three, very small 1/8" size allen screws, we use one 1/4" allen screw to lock the cap to the PVC stake. This allen screw utilizes the same hex wrench as the knuckle locking screw so that the fixture can be installed and adjusted with one tool. This design provides significant labor savings when installing 100 luminaires and mounts on a typical project.

In addition, this single, large allen screw is located 1/2" from the base of the mounting cap to keep it out of the soil thereby reducing the chance of corrosion, being filled with dirt and stripping the hardware during maintenance.



ORDERING EXAMPLE: MT - 46 - A - 12 - BZ