

Model	SI-1
Lamp:	MR16 Halogen or LED (order separately)
Maximum Wattage:	50 watts, 8 watt LED
Input Voltage:	12V (remote transformer required)
Material:	Machined Aluminum
Hardware:	Stainless Steel
Finishes:	Seven Polyester Powder Coat
Lens:	Tempered Clear Glass, flush lens
Mounting:	4/0 or 3/0 junction covers
Stem Length:	12", 18", 24", 30", 36", 42", 48"
Socket:	GY 6.35 Bi-Pin Porcelain
IP Rating:	66
Certification:	Wet location landscape, UL1838
Wiring:	2 ft. 16/2 low voltage cable
Weight:	2.4 lbs.
Warranty:	10 Years
Dimensions:	2 3/8" dia. x 5" (fixture)



Shown in Bronze Powder Coat Finish (BZ)



SORAA



ELI



BRILLIANCE

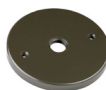


METALS:

6061-T6 Aluminum



Mounting Options:



4/0 Round



4/0 Square



3/0 Round



4/0 Box

ORDERING LOGIC:

Model:	SI - 1	
Metal:	A - Aluminum	
Cap:	1 - Flush 2 - Regress 3 - 45 Degree	
Mountings:	1 - 4/0 round 3 - 3/0 round	2 - 4/0 square 4 - 4/0 box
Stem Length:	12 - 12" 18 - 18" 24 - 24" 30" - 30"	36 - 36" 42 - 42" 48 - 48"
Finish:	BK - Black BZ - Bronze WT - White BG - Beige	BKT - Black Texture BZT - Bronze Texture SL - Silver CA - Clear Anodized

ANODIZING PROTECTION:

To increase the corrosion resistance in our products, we use a three-step process:

1. Machine 6061-T6 copper-free aluminum.
2. Anodized pre-treatment applied.
3. Polyester powder coat finish applied.



4/0 BOX:

Made for surface mount applications. Fits on to a standard 4/0 junction box. It holds a TR-8 power supply for low voltage fixtures. Accepts standard 4/0 round junction box cover.



ORDERING EXAMPLE: SI - 1 - A - 1 - 1 - 24 - BK