

Model	ST-40L
Lamp:	2W LED - 145 lumens
Input Voltage:	9-13VAC/DC* or 100-120VAC *(remote transformer required)
Material:	Cast Aluminum
Hardware:	Stainless Steel
Finishes:	Four Finishes
Mounting:	Junction Box - Single Gang (optional)
IP Rating:	65
Certification:	Wet location
Wiring:	4" - 18/2 Cable
Weight:	.4 lbs.
Warranty:	3 years
Dimensions:	3 1/4" H x 5 1/4" W



Shown in Brushed Nickel  
Finish (BN)



## METALS:

Cast Aluminum



## ORDERING LOGIC:

Model:	ST - 40L	
Metal:	A - Aluminum	
Voltage:	1 - 9-13VAC/DC	2 - 100-120VAC
Color:	27 - 2700K 40 - 4000K	30 - 3000K
Junction Box:	1 - With Jbox	2 - Without Jbox
Finish:	BK - Black WT - White	BN - Brushed Nickel DB - Dark Bronze

**ORDERING EXAMPLE:** ST - 40L - A - 1 - 27 - 1 - BK

## Finishes:



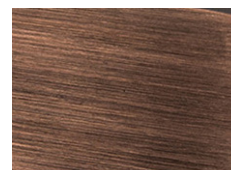
Black (BK)



White (WT)



Brushed  
Nickel (BN)



Dark  
Bronze (DB)