

Model	AL-28
Lamp:	PAR20 Halogen or LED
Maximum Wattage:	50 watt, 11watt LED
Input Voltage:	120V
Material:	Machined Aluminum
Hardware:	Stainless Steel
Finishes:	Seven Polyester Powder Coat
Knuckle:	Tapered & Positive Locking
Lens:	Tempered Clear Glass
Cap Accessories:	Holds two accessories (optional)
Mounting:	1/2" NPS (order mount separately)
Socket:	Medium base ceramic
IP Rating:	66
Certification:	Wet location
Wiring:	10" 18 ga Teflon Coated
Weight:	2.1 lbs.
Warranty:	10 Years
Dimensions:	3" dia. x 7 1/4" overall



Shown in Bronze Powder Coat Finish (BZ)



SORAA



BRILLIANCE



METALS:

6061-T6 Aluminum



Mounting Options:

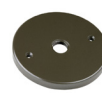
MT-4

MT-16

MT-24

MT-25

MT-26



ORDERING LOGIC:

Model:	AL - 28	
Metal:	A - Aluminum	
Finish:	BK - Black	BKT - Black Texture
	BZ - Bronze	BZT - Bronze Texture
	WT - White	SL - Silver
	BG - Beige	CA - Clear Anodized



ANODIZING PROTECTION:

To increase the corrosion resistance in our products, we use a three-step process:

1. Machine 6061-T6 copper-free aluminum.
2. Anodized pre-treatment applied.
3. Polyester powder coat finish applied.

ORDERING EXAMPLE: AL - 28 - A - BK