

Model	DL-6
Lamp:	MR11 Halogen (order separately)
Maximum Wattage:	20 watt, 2 watt LED
Input Voltage:	12V (remote transformer required)
Material:	Machined Aluminum
Hardware:	Stainless Steel
Finishes:	Seven Polyester Powder Coat
Lens:	Tempered Clear Glass
Cap Accessories:	Holds One accessory (optional)
Mounting:	1/2" NPS
Socket:	GY 6.35 Bi Pin Porcelain
IP Rating:	66
Certification:	Wet location
Wiring:	10" 18 ga Teflon Coated
Weight:	.4 lbs.
Warranty:	10 Years
Dimensions:	1 5/8" dia. x 3 1/2" overall



Shown in Bronze Powder Coat Finish (BZ)



ELI (MR8)



ELI (MR11)



BRILLIANCE



METALS:

6061-T6 Aluminum
Flush Lens Cap



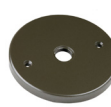
Mounting Plate Options:

4/0 Round



MT-25

3/0 Round



MT-27

Surface



MT-11

Surface



MT-21

ORDERING LOGIC:

Model:	DL - 6	
Metal:	A - Aluminum	
Mounting plate:	1 - 4/0 Round	3 - Surface MT-11
	2 - 3/0 Round	4 - Surface MT-21
Stem Length:	0 - none	9 - 9"
	3 - 3"	12 - 12"
	6 - 6"	18 - 18"
Finish:	BK - Black	BKT - Black Texture
	BZ - Bronze	BZT - Bronze Texture
	WT - White	SL - Silver
	BG - Beige	CA - Clear Anodized



Various mounting options are available for junction boxes and surface mounting. Stem extensions can be added for the desired application.

ORDERING EXAMPLE: DL - 6 - A - 1 - 0 - BK