

Model	DL-11
Lamp:	MR16 Halogen or LED(not included)
Maximum Wattage:	35 watt, 8 watt LED
Input Voltage:	12V (remote transformer required)
Material:	Machined Aluminum
Hardware:	Stainless Steel
Finishes:	Seven Polyester Powder Coat
Lens:	Tempered Clear Glass
Cap Accessories:	Holds one accessory (optional)
Mounting:	1/2" NPS
Socket:	GY-6.35 Bi Pin Porcelain
IP Rating:	66
Certification:	Wet location
Wiring:	10" 18 ga Teflon Coated
Weight:	.10 lbs.
Warranty:	10 Years
Dimensions:	2 3/8" dia. x 4 3/4" long



Shown in Bronze Powder Coat Finish (BZ)



SORAA

DAUER

BRILLIANCE



METALS:

6061-T6 Aluminum
1" Regress Lens Cap



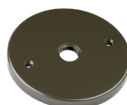
Mounting Plate Options:

4/0 Round

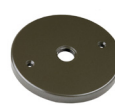
3/0 Round

Surface

Surface



MT-25



MT-27



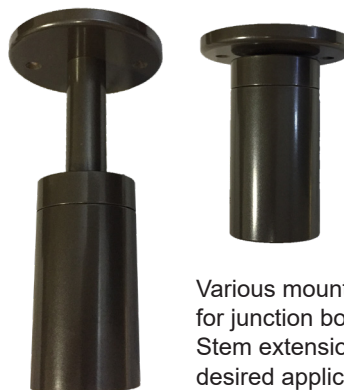
MT-11



MT-21

ORDERING LOGIC:

Model:	DL - 11
Metal:	A - Aluminum
Mounting plate:	1 - 4/0 Round 3 - Surface MT-11 2 - 3/0 Round 4 - Surface MT-21
Stem Length:	0 - none 9 - 9" 3 - 3" 12 - 12" 6 - 6" 18 - 18"
Finish:	BK - Black BKT - Black Texture BZ - Bronze BZT - Bronze Texture WT - White SL - Silver BG - Beige CA - Clear Anodized



Various mounting options are available for junction boxes and surface mounting. Stem extensions can be added for the desired application.

ORDERING EXAMPLE: DL - 11 - A - 1 - 0 - BK