

Model	WA-19
Lamp:	MR16 Halogen, LED
Maximum Wattage:	75 watt, 9 watt LED
Input Voltage:	12V (remote transformer required)
Material:	Machined Aluminum
Hardware:	Stainless Steel
Finishes:	Seven Polyester Powder Coat
Lens:	Tempered Clear Glass, Regress
Cap Accessories:	Holds two accessories (optional)
Mounting:	Three plate options
Socket:	GY-6.35 Bi Pin Porcelain
IP Rating:	66
Certification:	Wet location
Wiring:	10" 18 ga Teflon Coated
Weight:	2.1 lbs.
Warranty:	10 Years
Dimensions:	3" dia. x 7" overall



Shown in Bronze Texture Powder Coat Finish (BZT)

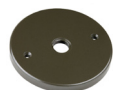


METALS:

6061-T6 Aluminum



Mounting Plate Options:



4/0 Round



4/0 Square



3/0 Round

ORDERING LOGIC:

Model:	WA - 19	
Metal:	A - Aluminum	
Mounting Plate:	1 - 4/0 Round 3 - 3/0 Round	2 - 4/0 Square
Finish:	BK - Black BZ - Bronze WT - White BG - Beige	BKT - Black Texture BZT - Bronze Texture SL - Silver CA - Clear Anodized

ORDERING EXAMPLE: WA - 19 - A - 1 - BK

HEAT MANAGEMENT:

LED lamps produce lots of heat that needs to be managed in order for the lamp to operate at optimum levels. Many LED lamp manufacturers have built-in thermal devices that cause the lamp to reduce its lumen output to prevent overheating caused by improper airflow and heat transfer. Our primary LED supplier, Sora, produces these types of lamps. To solve this problem, we have designed a light fixture that offers both increased airflow and better heat transfer. This fixture is designed to operate with Sora Lamp 9 watts. Tests show that this design provides for an environment whereby the lumen output reduction for long-term lamp operation is less than 5%.



SEALED WIRE PASS-THRU SYSTEM:

Our molded, high-temperature silicone wire pass-thru system is installed into every product to prevent water intrusion. Water will not leak into the lamp compartment when used for downlighting in trees. The socket is replaceable because it is not glued in.