

Model	SI-10
Lamp:	MR16 Halogen or LED (order separately)
Maximum Wattage:	50 watts, 8 watt LED
Input Voltage:	12V (remote transformer required)
Material:	Machined Aluminum
Hardware:	Stainless Steel
Finishes:	Seven Polyester Powder Coat
Lens:	Tempered Clear Glass, flush cap
Mounting:	4/0 or 3/0 junction covers
Stem Length:	12", 18", 24", 30", 36", 42", 48"
Socket:	GY 6.35 Bi Pin Porcelain
IP Rating:	66
Certification:	Wet location landscape, UL2108
Wiring:	2 ft. 16/2 low voltage cable
Weight:	2.4 lbs.
Warranty:	10 Years
Dimensions:	2 3/8" dia. x 4" (fixture)



Shown in Black Powder Coat Finish (BK)



SORAA



ELI



BRILLIANCE

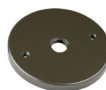


METALS:

6061-T6 Aluminum



Mounting Options:



4/0 Round



4/0 Square



3/0 Round



4/0 Box

ORDERING LOGIC:

Model:	SI - 10
Metal:	A - Aluminum
Mountings:	1 - 4/0 round 3 - 3/0 round
Stem Length:	12 - 12" 18 - 18" 24 - 24" 30" - 30"
Finish:	BK - Black BZ - Bronze WT - White BG - Beige
	BKT - Black Texture BZT - Bronze Texture SL - Silver CA - Clear Anodized

ORDERING EXAMPLE: SI - 10 - A - 1 - 24 - BK

ANODIZING PROTECTION:

To increase the corrosion resistance in our products, we use a three-step process:

1. Machine 6061-T6 copper-free aluminum.
2. Anodized pre-treatment applied.
3. Polyester powder coat finish applied.



4/0 BOX:

Made for surface mount applications the surface box fits on to a standard 4/0 junction box. It holds a TR-8 power supply for low voltage fixtures. It accepts standard 4/0 round junction box cover.

