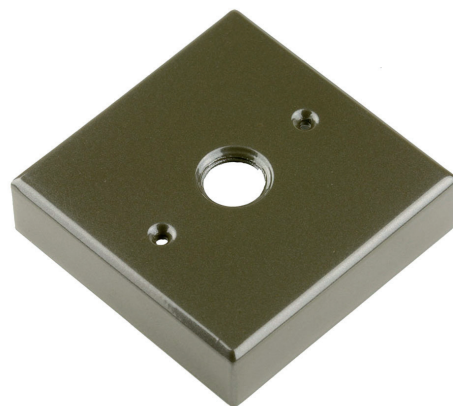


Model	MT-23
Material:	Machined Aluminum
Fixture Mount:	1/2" NPS
Mount Holes:	Two 3/16" Mounting Holes
Finishes:	7 Polyester Powder Coat
Certification:	Wet location landscape, UL1838
Weight:	.8 lbs.
Warranty:	Aluminum: 10 Years
Dimensions:	4" square x 1" High



Shown in Bronze Powder
Coat Finish (BZ)

ACCESSORIES



AY - 4



AY - 8



AY - 13



METALS:

6061-T6 Aluminum



ORDERING LOGIC:

Model: MT - 23

Metal: A - Aluminum

Finish: BK - Black BKT - Black Texture
 BZ - Bronze BZT - Bronze Texture
 WT - White SL - Silver
 BG - Beige CA - Clear Anodized

ORDERING EXAMPLE: MT - 23 - A - WT