

Model	MT-43
Material:	Machined Aluminum
Mount:	1/2" NPSF Thread on Stem
Adjustable Stem:	9", 12", 18" or 24" lengths
Fixed Sleeve Length:	8" long
Hardware:	Stainless Steel
Bushing:	Machined Delrin 'T' Design
Finishes:	7 Polyester Powder Coat
Certification:	Wet location landscape, UL1838
Weight:	4.0 lbs.
Warranty:	10 Years
Dimensions:	1 3/4" dia. sleeve, 1" dia. stem, 2 3/4" dia. x 1 3/4" surface mount base



Shown with stem retracted.



Shown with stem extended.



Standard two piece base for easy installation.



METALS:

6061-T6 Aluminum



ORDERING LOGIC:

Model:	MT - 43	
Metal:	A - Aluminum	
Stem Length:	9 - 9" 18 - 18"	12 - 12" 24 - 24"
Mount base options:	0 - Standard 2 - MT-25 4 - MT-27	1 - MT-24 3 - MT-26
Finish:	BK - Black BZ - Bronze WT - White BG - Beige	BKT - Black Texture BZT - Bronze Texture SL - Silver CA - Clear Anodized

ORDERING EXAMPLE: MT - 43 - A - 9 - 0 - BZ

DESIGN FEATURES:

Design features of our Model MT-43 Adjustable Surface Mount offers improved performance when compared to the competition.

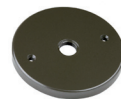
Our Delrin® bushing is 'T' shaped to prevent it from 'punching through' when the stem is adjusted and provides positive locking.



Mounting Base Options



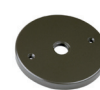
MT - 24
Single gang
box cover



MT - 25
4/0 box
cover



MT - 26
4/0 box
cover



MT - 27
3/0 box
cover