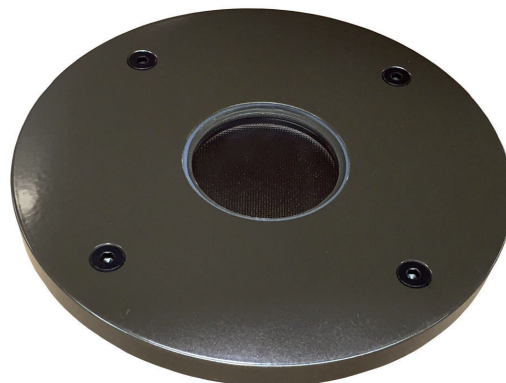


Model	IN-20
Lamp:	MR16 Halogen or LED
Maximum Wattage:	35 watt, 8 watt LED
Input Voltage:	12V (remote transformer required)
Material:	Machined Aluminum
Hardware:	Stainless Steel
Finishes:	Seven Polyester Powder Coat
Lens:	Tempered Clear Glass
Accessories:	Holds Three accessories (optional)
Mounting:	In Ground/Concrete Pour
Socket:	GY-6.35 Bi Pin Porcelain
IP Rating:	67
Certification:	Wet location landscape, UL1838
Wiring:	6' 16/2 Low Voltage Cable
Weight:	2.5 lbs.
Warranty:	Aluminum: 10 Years
Dimensions:	6" dia. x 5 3/8" overall



Shown in Bronze Powder Coat Finish (BZ)



SORAA DAUER BRILLIANCE



METALS:

6061-T6 Aluminum



CORE DRILL DESIGN:

Core Drill design for stone, brick or concrete installations. Core size of 2 1/2" is required. Not for use with combustible surfaces. Two feet of low voltage cable with strain relief is supplied.

ORDERING LOGIC:

Model:	IN - 20
Metal:	A - Aluminum
Finish:	BK - Black BZ - Bronze WT - White BG - Beige
	BKT - Black Texture BZT - Bronze Texture SL - Silver CA - Clear Anodized



ANODIZING PROTECTION:

To increase the corrosion resistance in our products, we use a three-step process:

1. Machine 6061-T6 copper-free aluminum.
2. Anodized pre-treatment applied.
3. Polyester powder coat finish applied.

ORDERING EXAMPLE: IN - 20 - A - BK



SEALED WIRE PASS-THRU SYSTEM:

Our molded, high-temperature silicone wire pass-thru system is installed into every product to prevent water intrusion. Water will not leak into the lamp compartment when used for downlighting in trees. The socket is replaceable because it is not glued in.