

Model	WA-23
Lamp:	MR16 Halogen or LED
Maximum Wattage:	50 watt, 8 watt LED
Input Voltage:	120V
Material:	Machined Aluminum
Hardware:	Stainless Steel
Finishes:	Seven Polyester Powder Coat
Lens:	Tempered Clear Glass
Cap Accessories:	Holds two accessories (optional)
Mounting:	Three plate options
Socket:	GU 10 Porcelain
IP Rating:	66
Certification:	Wet location
Wiring:	10" 18 ga Teflon Coated
Weight:	2.1 lbs.
Warranty:	10 Years
Dimensions:	3" dia. x 6 1/4" overall



Shown in Bronze Texture Powder Coat Finish (BZT)



SORAA



BRILLIANCE

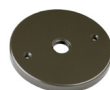


METALS:

6061-T6 Aluminum



Mounting Plate Options:



4/0 Round



4/0 Square



3/0 Round

ORDERING LOGIC:

Model:	WA -23	
Metal:	A - Aluminum	
Mounting Plate:	1 - 4/0 Round 3 - 3/0 Round	2 - 4/0 Square
Finish:	BK - Black BZ - Bronze WT - White BG - Beige	BKT - Black Texture BZT - Bronze Texture SL - Silver CA - Clear Anodized



ANODIZING PROTECTION:

To increase the corrosion resistance in our products, we use a three-step process:

1. Machine 6061-T6 copper-free aluminum.
2. Anodized pre-treatment applied.
3. Polyester powder coat finish applied.

ORDERING EXAMPLE: WA - 23 - A - 1 - BK