

Model	WA-33
Lamp:	MR16 Halogen, LED
Maximum Wattage:	75 watt, 9 watt LED (X2)
Input Voltage:	12V (remote transformer required)
Material:	Machined Aluminum
Hardware:	Stainless Steel
Finishes:	Seven Polyester Powder Coat
Lens:	Tempered Clear Glass, Flush lens
Cap Accessories:	Holds two accessories (optional)
Mounting:	Three plate options
Socket:	GY-6.35 Bi Pin Porcelain
IP Rating:	66
Certification:	Wet location
Wiring:	10" 18 ga Teflon Coated
Weight:	3.0 lbs.
Warranty:	10 Years
Dimensions:	3" dia. x 9 5/8" overall



Shown in Bronze Powder Coat Finish (BZ)



SORAA  
(9W)

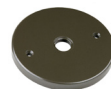


## METALS:

6061-T6 Aluminum



## Mounting Plate Options:



4/0 Round



4/0 Square



3/0 Round

## ORDERING LOGIC:

Model:	WA - 33	
Metal:	A - Aluminum	
Mounting Plate:	1 - 4/0 Round 3 - 3/0 Round	2 - 4/0 Square
Finish:	BK - Black BZ - Bronze WT - White BG - Beige	BKT - Black Texture BZT - Bronze Texture SL - Silver CA - Clear Anodized

**ORDERING EXAMPLE:** WA - 33 - A - 1 - BK

## ANODIZING PROTECTION:

To increase the corrosion resistance in our products, we use a three-step process:

1. Machine 6061-T6 copper-free aluminum.
2. Anodized pre-treatment applied.
3. Polyester powder coat finish applied.



## SEALED WIRE PASS-THRU SYSTEM:

Our molded, high-temperature silicone wire pass-thru system is installed into every product to prevent water intrusion. Water will not leak into the lamp compartment when used for downlighting in trees. The socket is replaceable because it is not glued in.