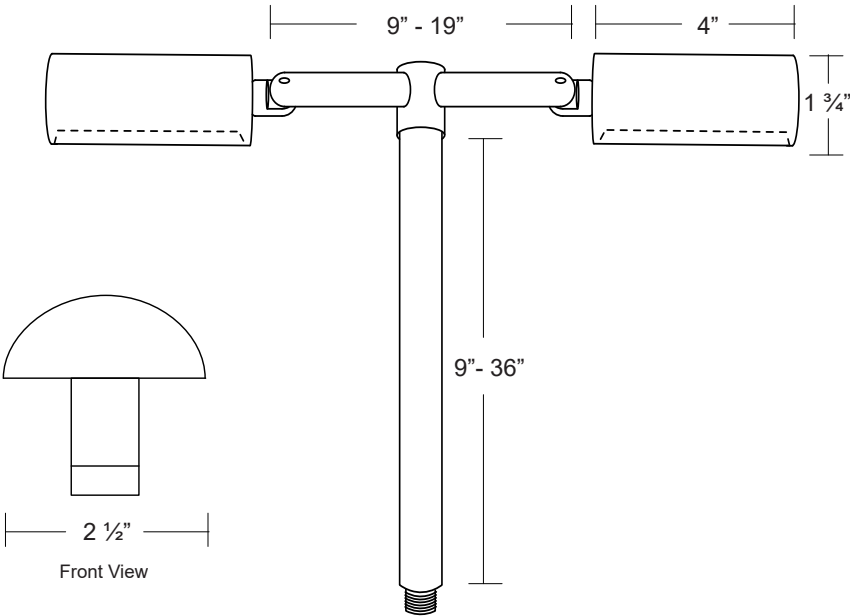


DUAL STAFF WASH LIGHT12V T4 35W 5W LEDMODEL PL-34

Specification-grade landscape lighting, wet-location luminaire for path or wash lighting applications.

- Machined 6061-T6 copper-free aluminum. Aluminum components are anodized, then a polyester powder coat finish is applied.
- Seven standard TGIC powder coat finishes available.
- Remote transformer required.
- Stainless steel hardware.
- 6 feet of 16/2 low voltage cable supplied.
- Tempered frosted glass lens.
- Stems lengths of 6"- 36" available. Mount not included.
- High-temperature silicone O-ring seals are used to seal the cover against the body.
- Listed for wet location use.
- Warranty: 10 Years.



Specifications:

| | | | | |
|-----------|---|-----------|--|--|
| MODEL: | PL-34 | LAMPING: | T4 Halogen, 35W Maximum (X2) (order separately) 5W LED (X2) (order separately) | |
| MATERIAL: | 6061-T6 Aluminum | | | |
| VOLTAGE: | 12V | | | |
| WATTAGE: | 35 Watt (X2) | FINISHES: | BK - Black BZ - Bronze WT - White BG - Beige | BKT - Black Texture BZT - Bronze Texture SL - Silver |
| SOCKET: | GY-6.35 Bi-pin porcelain socket rated 600V, 250°C 18 ga, Teflon® coated leads. | | | |

Ordering Logic:

| MODEL | METAL | FIXTURE SPACING | | VERTICAL STEM | | FINISH | |
|-------|--------------|-----------------|----------|---------------|----------|-------------|----------------------|
| PL-34 | A - Aluminum | 9 - 9" | 13 - 13" | 6 - 6" | 24 - 24" | BK - Black | BKT - Black Texture |
| | | 11 - 11" | 19 - 19" | 9 - 9" | 30 - 30" | BZ - Bronze | BZT - Bronze Texture |
| | | | | 12 - 12" | 36 - 36" | WT - White | SL - Silver |
| | | | | 18 - 18" | | BG - Beige | |

ORDERING EXAMPLE: PL - 34 - A - 9 - 12 - BZT

Excelsior Lighting, Inc.

PROJECT
TYPE